

MIRRORS - POWER

1994 Toyota Celica

1994 ACCESSORIES & EQUIPMENT
Toyota Motor Sales, U.S.A., Inc. - Power Mirrors
Celica

DESCRIPTION & OPERATION

Power mirrors are controlled by a dual control switch assembly, located on center console or instrument panel. Left/right control switch directs current to desired mirror. Horizontal/vertical control switch directs current to one of 2 motors located in mirror/motor assembly. Mirror and motors must be removed and serviced as an assembly.

TROUBLE SHOOTING

POWER MIRROR

Both Power Mirrors Inoperative

Check RADIO fuse, power mirror switch, power mirror motor(s), wiring and ground. See TESTING.

Left Or Right Power Mirror Inoperative

Check power mirror switch, power mirror motor(s), wiring and ground. See TESTING.

Up/Down Or Left/Right Function Inoperative

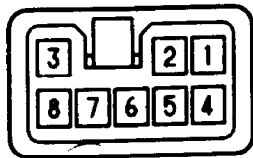
Check power mirror motor(s), wiring and ground. See POWER MIRROR MOTOR TEST under TESTING.

TESTING

POWER MIRROR SWITCH TEST

NOTE: Mirror motor connectors may vary in configuration from vehicle to vehicle of the same model.

Remove power mirror switch. See POWER MIRROR SWITCH under REMOVAL & INSTALLATION. Using ohmmeter, check continuity between appropriate mirror switch terminals. See Fig. 1. See POWER MIRROR SWITCH CONTINUITY TEST table. If switch fails any test, replace switch.



MIRROR CONTROL SWITCH



MIRROR MOTOR

93D02717

Fig. 1: Power Mirror Switch & Motor Connector Terminals
Courtesy of Toyota Motor Sales, U.S.A., Inc.

POWER MIRROR SWITCH CONTINUITY TEST TABLE

Application	Terminals
Switch In Off Position	
Up	2 & 3
Down	1 & 2
Left	2 & 3
Right	1 & 2
Switch In Left Position	
Up	2 & 3; 7 & 8
Down	2 & 7; 3 & 8
Left	1 & 3; 7 & 8
Right	1 & 7; 3 & 8
Switch In Right Position	
Up	1 & 6; 3 & 4
Down	1 & 3; 4 & 6
Left	1 & 2; 3 & 4
Right	1 & 3; 2 & 4

POWER MIRROR MOTOR TEST

NOTE: Mirror motor connectors may vary in configuration from vehicle to vehicle of the same model.

Disconnect power mirror motor harness connector. Using 12-volt power source, connect positive and negative leads to specified pins or terminals. See POWER MIRROR MOTOR TEST table. See Fig. 1. If power mirror motor fails any test, replace power mirror assembly.

POWER MIRROR MOTOR TEST TABLE

Apply 12 Volts To Pin No.	Ground Pin No.	Mirror Operation
3	2	Up
2	3	Down
1	2	Left
2	1	Right

REMOVAL & INSTALLATION

POWER MIRROR SWITCH

Removal & Installation

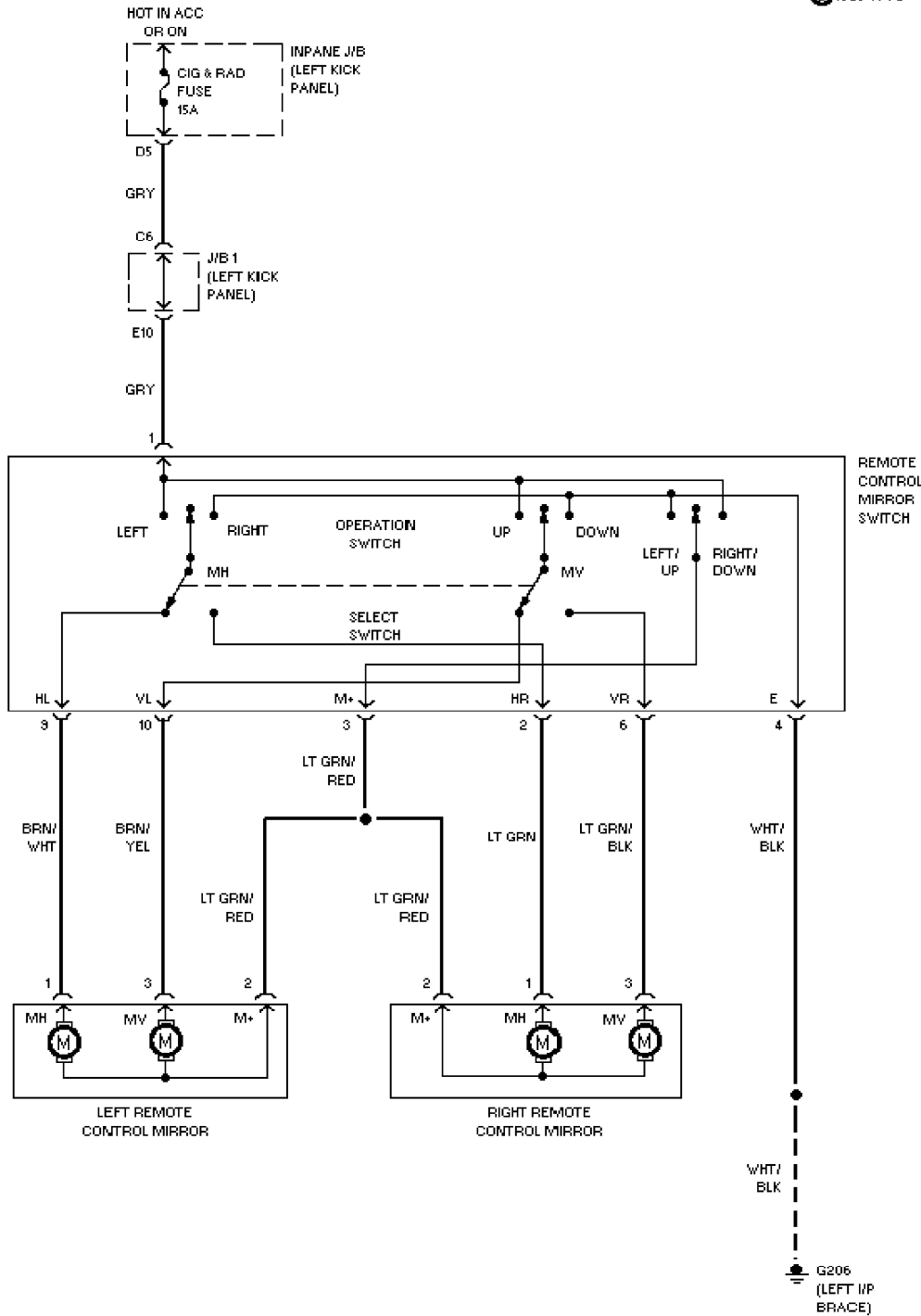
Remove console box retaining screws and raise console box enough to disconnect mirror switch harness connector. Push on switch's connector end to remove switch from console box. To install, reverse removal procedure.

POWER MIRROR ASSEMBLY

Removal & Installation

Remove mirror inner trim panel on inside of the door. Disconnect power mirror motor harness connector. Support outside mirror assembly while removing 3 mirror retaining screws/bolts on inside of the door. To install, reverse removal procedure.

WIRING DIAGRAMS



63817

Fig. 2: Power Mirror Wiring Diagram (W/Power Windows)

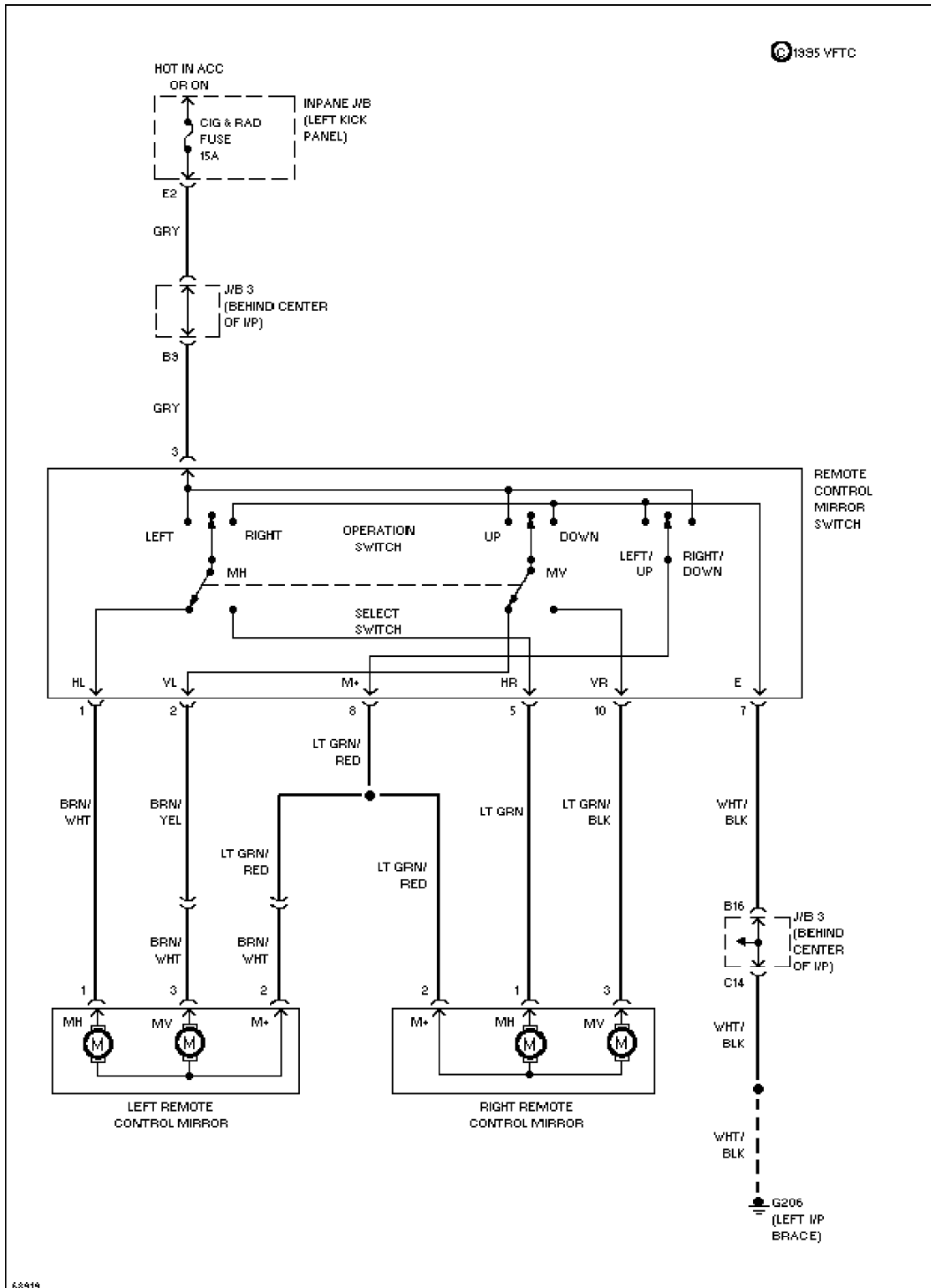


Fig. 3: Power Mirror Wiring Diagram (W/O Power Windows)