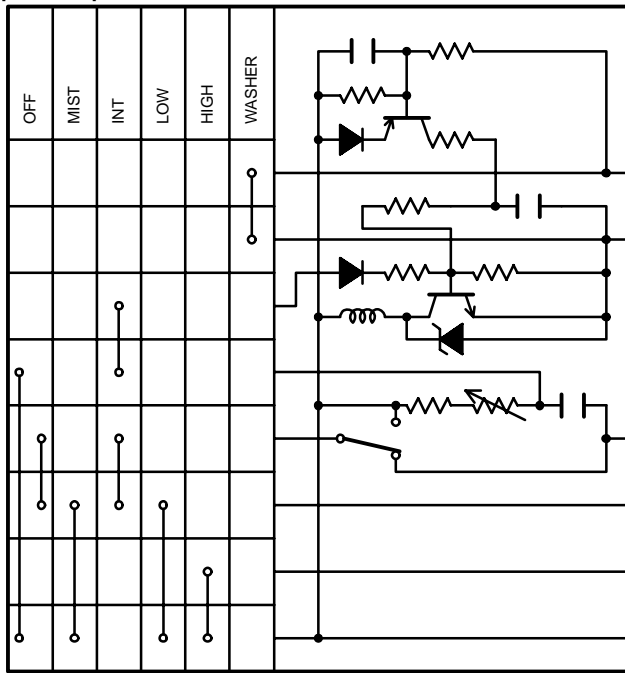


# FRONT WIPER AND WASHER

FROM POWER SOURCE SYSTEM (SEE PAGE 52)

**C17**  
FRONT WIPER AND WASHER SW (W/ WIPER RELAY)  
[COMB. SW]



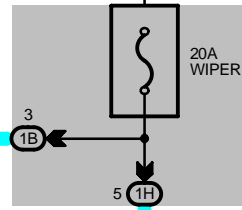
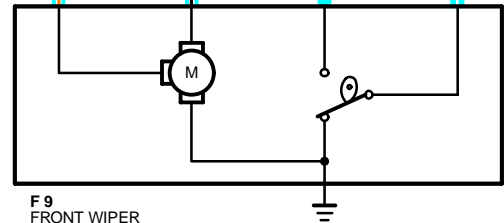
W 1  
WASHER  
MOTOR

2  
1  
L-R

J 6  
JUNCTION  
CONNECTOR  
(FOR EARTH)



F 9  
FRONT WIPER  
MOTOR



## SYSTEM OUTLINE

WITH THE IGNITION SW TURNED ON, THE CURRENT FLOWS TO **TERMINAL 18** OF THE WIPER AND WASHER SW, **TERMINAL 2** OF THE WASHER MOTOR AND **TERMINAL 4** OF THE FRONT WIPER MOTOR THROUGH THE WIPER FUSE.

### 1. LOW SPEED POSITION

WITH WIPER SW TURNED TO **LOW** POSITION, THE CURRENT FLOWS FROM **TERMINAL 18** OF THE WIPER AND WASHER SW → **TERMINAL 7** → **TERMINAL 2** OF THE FRONT WIPER MOTOR → FRONT WIPER MOTOR → TO **GROUND** AND CAUSES TO THE WIPER MOTOR TO RUN AT LOW SPEED.

### 2. HIGH SPEED POSITION

WITH WIPER SW TURNED TO **HIGH** POSITION, THE CURRENT FLOWS FROM **TERMINAL 18** OF THE WIPER AND WASHER SW → **TERMINAL 13** → **TERMINAL 1** OF THE FRONT WIPER MOTOR → FRONT WIPER MOTOR → TO **GROUND** AND CAUSES TO THE WIPER MOTOR TO RUN AT HIGH SPEED.

### 3. INT POSITION (W/ INT SW)

WITH WIPER SW TURNED TO **INT** POSITION, THE RELAY OPERATES AND THE CURRENT WHICH IS CONNECTED BY RELAY FUNCTION FLOWS FROM **TERMINAL 18** OF THE WIPER AND WASHER SW → **TERMINAL 16** → TO **GROUND**. THIS FLOW OF CURRENT OPERATES THE INTERMITTENT CIRCUIT AND THE CURRENT FLOWS FROM **TERMINAL 18** OF THE WIPER AND WASHER SW → **TERMINAL 7** → **TERMINAL 2** OF THE FRONT WIPER MOTOR → FRONT WIPER MOTOR → TO GROUND AND FUNCTIONS.

THE INTERMITTENT OPERATION IS CONTROLLED BY A CONDENSER'S CHARGED AND DISCHARGED FUNCTION INSTALLED IN RELAY AND THE INTERMITTENT TIME IS CONTROLLED BY A TIME CONTROL SW TO CHANGE THE CHARGING TIME OF THE CONDENSER.

### 4. MIST POSITION (W/ MIST SW)

WITH WIPER SW TURNED TO **MIST** POSITION, THE CURRENT FLOWS FROM **TERMINAL 18** OF THE WIPER AND WASHER SW → **TERMINAL 7** → **TERMINAL 2** OF THE FRONT WIPER MOTOR → FRONT WIPER MOTOR → TO GROUND AND CAUSES TO THE WIPER MOTOR TO RUN AT LOW SPEED.

### 5. WASHER CONTINUOUS OPERATION (W/ INT CONTROL)

WITH WASHER SW TURNED TO ON, THE CURRENT FLOWS FROM **TERMINAL 2** OF THE WASHER MOTOR → **TERMINAL 1** → **TERMINAL 8** OF THE WIPER AND WASHER SW → **TERMINAL 16** → TO GROUND AND CAUSES TO THE WASHER MOTOR TO RUN, AND WINDOW WASHER IS JET. THIS CAUSES THE CURRENT TO FLOW WASHER CONTINUOUS OPERATION CIRCUIT (W/ INT SW) IN **TERMINAL 18** OF THE WIPER AND WASHER SW → **TERMINAL 7** → **TERMINAL 2** OF THE FRONT WIPER MOTOR → FRONT WIPER MOTOR → TO **GROUND** AND FUNCTION.

## SERVICE HINTS

### C17 FRONT WIPER AND WASHER SW (W/ WIPER RELAY)

16-GROUND: ALWAYS CONTINUITY

18-GROUND: APPROX. 12 VOLTS WITH IGNITION SW AT **ON** POSITION

7-GROUND : APPROX. 12 VOLTS WITH WIPER AND WASHER SW AT **LOW** POSITION

APPROX. 12 VOLTS EVERY APPROX. 1 TO 10 SECONDS INTERMITTENTLY WITH WIPER SW AT **INT** POSITION

4-GROUND : APPROX. 12 VOLTS WITH IGNITION SW ON UNLESS WIPER MOTOR AT **STOP** POSITION

13-GROUND: APPROX. 12 VOLTS WITH IGNITION SW ON AND AFTER WIPER SW OFF UNTIL WIPER MOTOR STOPS

### F 9 FRONT WIPER MOTOR

3-4 : CLOSED UNLESS WIPER MOTOR AT **STOP** POSITION

## ○ : PARTS LOCATION

CODE	SEE PAGE	CODE	SEE PAGE	CODE	SEE PAGE
<b>C17</b>	28	<b>J 6</b>	29		
<b>F 9</b>	26 (5S-FE), 27 (4A-FE)	<b>W 1</b>	26 (5S-FE), 27 (4A-FE)		

## ○ : JUNCTION BLOCK AND WIRE HARNESS CONNECTOR

CODE	SEE PAGE	JUNCTION BLOCK AND WIRE HARNESS (CONNECTOR LOCATION)
<b>1B</b>	18	COWL WIRE AND J/B NO. 1 (LEFT KICK PANEL)
<b>1H</b>	18	ENGINE ROOM MAIN WIRE AND J/B NO. 1 (LEFT KICK PANEL)

## □ : CONNECTOR JOINING WIRE HARNESS AND WIRE HARNESS

CODE	SEE PAGE	JOINING WIRE HARNESS AND WIRE HARNESS (CONNECTOR LOCATION)
<b>IE1</b>	36	ENGINE ROOM MAIN WIRE AND COWL WIRE (LEFT KICK PANEL)

## ▽ : GROUND POINTS

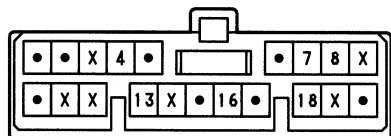
CODE	SEE PAGE	GROUND POINTS LOCATION
<b>ID</b>	36	LEFT KICK PANEL

# FRONT WIPER AND WASHER

 : SPLICE POINTS

CODE	SEE PAGE	WIRE HARNESS WITH SPLICE POINTS	CODE	SEE PAGE	WIRE HARNESS WITH SPLICE POINTS
12	36	COWL WIRE			

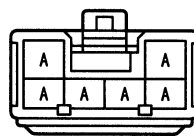
**C17 BLACK**



**F 9 GRAY**



**J 6**



(HINT:SEE PAGE 7)

**W 1 GRAY**

